

NANOPAR

INNLED®
#madeinfrance

A real concentrate of power, the nanoPAR is the heart of the INNLED range. Designed to be **discreet**, it is ideal for **lighting up the smallest details of spaces as well as objects**. It blends in perfectly to **museum, exhibitions and interior spaces**.

This mini projector is **easily adjustable**, with only your fingertips. Choose the finish, the angle of the beam and the color of the source. The nanoPAR also exists in a **wall-mounted version**, delivered with its standard recessed casing.



1. 3000K
4000K
6000K

2. 2,5W
700mA

3. Choice of
lenses



TECHNICAL SPECIFICITIES



MATERIALS

- Body in solid aluminium

LED SPOT POWER

- 2,5W

TECHNOLOGY

- LED Cree XPG2

LIGHTING SOURCE

- 180 lumens

EXTERNAL POWER SUPPLY

(not supplied)

- Constant current power supply 700mA, 3 to 8 Nanopar 90-230V AC - 6 to 48V

CLASS

- III

IP CLASS

- IP43
- IK10

NORM

- CE

ELECTRICAL CONNECTION

- Extra flexible stripped wire cables : 0,5m

SET UP

- By an electrician

TEMPERATURE RANGE

- -30°C to +60°C

LED LIFESPAN

- 50 000h

WARRANTY

- 2 ans

DIMENSIONS

- Head : 30 x 30 x 30 mm
- Total height : 55 mm

WEIGHT

- 520g

ORDER OPTIONS

FINISH

- **Standard** : Black anodized
- **Upon order** : Natural anodized

COLOUR TEMPERATURE

- **Standard** : 4000K (neutral white)
- **Upon order** : 3000K (warm white) or 6000K (cool white)

OPTICAL LENSES

- **Standard** : 26°
- **Upon order** : 6° / 16° / 46° / asymmetrical 38°x21°

ACCESSORIES

1. 700mA IP20 POWER SUPPLY



EXTERNAL POWER SUPPLY (not supplied)

- Constant current power supply 700 mA, from 3 to 8 nanoPAR 90-230V AC- 6 at 48V, 700mA constant
- Series wiring.

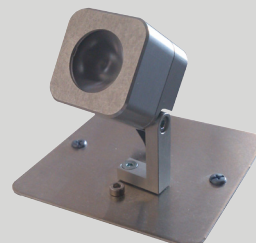
2. LENSES



CHOICE OF LENSES

- 6° / 10° / 26° / 46° / 38°x21°

3. WALL-MOUNTED NANOPAR



This option offers a simplified fitting for installing nanoPAR on walls or ceilings thanks to its top plate and standard recessed casing.

- The kit is composed of :
 - 1 anodized nanopar (aluminium or black finish)
 - 1 aluminium plate, anodized, dimensions 80 x 80 mm
 - 1 standard recessed casing, type Batibox (Legrand) : depth 40 mm

