



K2

LIGHT FOR THE UNREACHABLE





4,5W Power

K2

The K2 is a compact and autonomous light fixture with 2 led spotlights.

Designed for maximum versatility K2 is equipped with a neodymium magnet and can be placed, fixed or hung from most surfaces or structures. Its 30cm length and its light weight, enhances K2's portability and widens its field of possibilities.

The accessory kit allows access to spaces which are more difficult to reach, thanks to the Velcro® straps, the magnetic counter plate and the metallic slings.

K2 is **operated manually** with a simple on / off switch and the two XPG2 Cree leds per spotlight can be mounted in **3000K or 4000K**.

360° Rotation
Individually adjustable

1 Event Application

2 Battery operated

3 3000K or 4000K

4 6,5h autonomy



ITS ACCESSORIES

Fix your K2 to all structures and surfaces with :

- **a magnetic counter-plate**

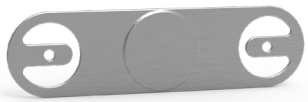
> which can be screwed vertically or horizontally, or placed on either side of a canvas (sunshade umbrellas, tents or barnums) (a)

- **two Velcro® straps**

> to fix K2 to the metallic counter plate and attach to tree branches in parks or gardens, or other non metallic structures ... (b)

- **two metallic slings**

> to be used with the metallic counter-plate and allowing K2 to be suspended from any structure or surface (c)



(a)



(b)



(c)

A SIMPLICITY OF USE

K2 is designed to be easy and intuitive. Simply switch it on and place it wherever you need light ! Enjoy high quality light at the end of your fingertips.



Event



Exhibition



Catering



Retail





innLED

REVEALING SENSES

360 avenue des Compagnons
34170 Castelnau-le-Lez
FRANCE

contact@innled.fr

www.innled.fr

